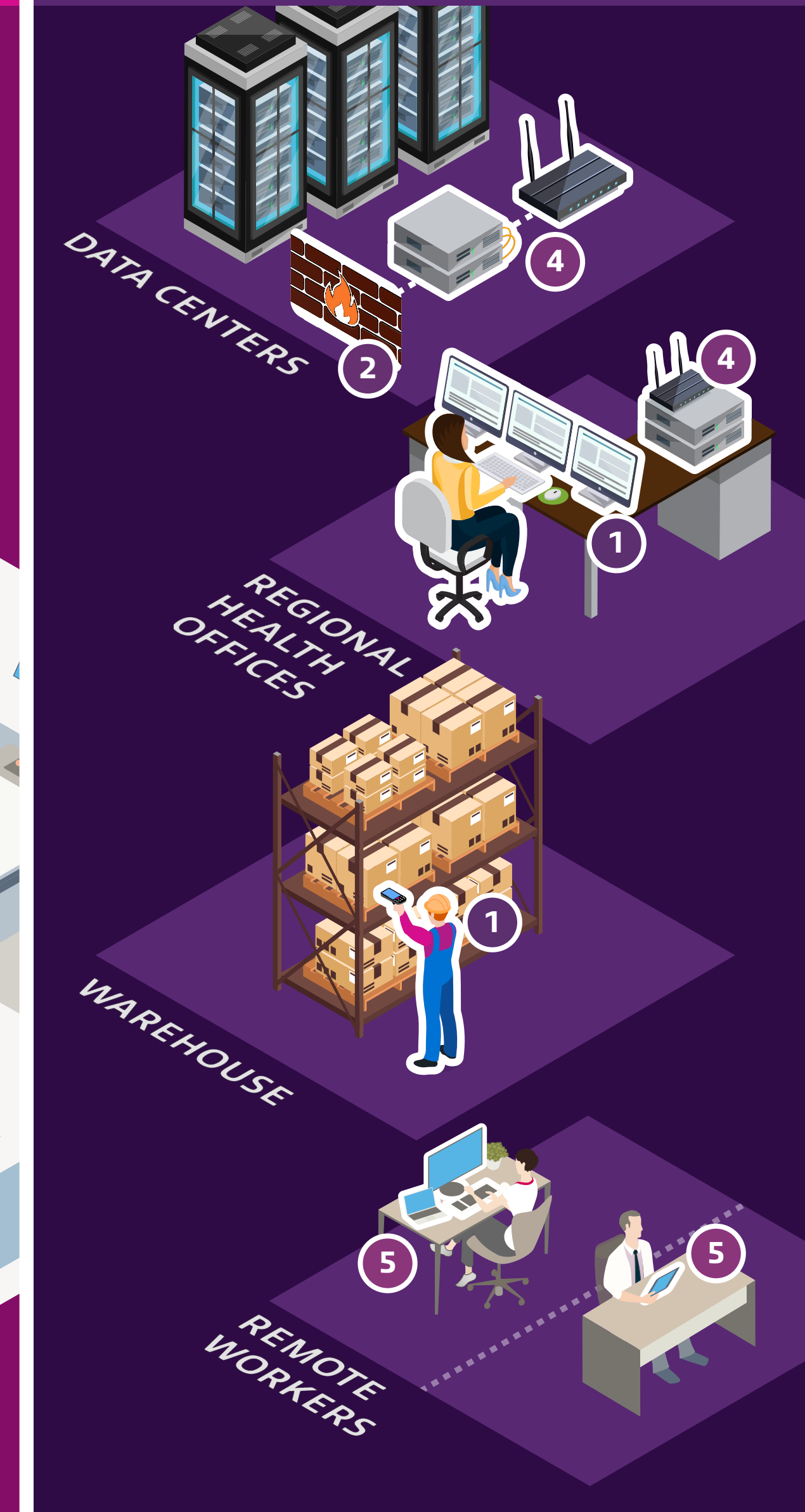


- 1** **Wireless access points** expand wireless coverage for staff, patients and guests.
- 2** **Next-Generation Firewalls (NGFWs)** reduce cyberthreats and support HIPAA-compliant data protection.
- 3** **Physical security solutions** protect personnel, patients and critical data.
- 4** **Routers and switches** increase network availability, optimize bandwidth, reduce costs and hardware footprint, and improve remote access.
- 5** **Modern devices** enable patients and workers with telehealth and video conferencing.
- 6** **Distributed Antenna Systems (DAS)** support cell amplification for large-area coverage.

ON-SITE



OFF-SITE



Insight has an expert team of network modernization professionals who specialize in transforming networks for government and healthcare sector clients. This group is seasoned in architecting, designing, and implementing reliable and robust networks needed to support critical functions and meeting the need for compliance with industry-specific regulatory standards.

Network modernization benefits



Internet of Things (IoT)-enabled networks



Reliable wired and wireless networks

- ✓ Increased bandwidth
- ✓ Reliable wireless connectivity with increased coverage
- ✓ Less network congestion
- ✓ More secure network



Network automation



Seamless integration with other technologies and systems



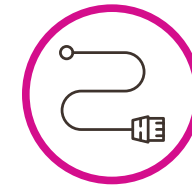
Holistic and requirements-driven approach to security

Why Insight



Deep expertise

Our expertise results from successful transformations of networks supporting critical services for thousands of satisfied client organizations.



Fit-for-purpose physical designs

Our physical designs address a holistic set of network requirements for each location:

- ✓ Final wireless design and AP placement
- ✓ Detailed network closet design
- ✓ Networking Bills of Materials (BOMs)
- ✓ Cabling BOM
- ✓ Detailed implementation instructions per closet



Knowledge of local conditions on a national scale

Our teams are able to leverage experience of challenges faced in transforming facility network infrastructure across all 50 states and Canada, including:

- ✓ Weather/extreme weather
- ✓ Transport routes
- ✓ Local policy/legislation



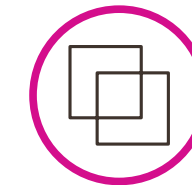
Knowledge of government and healthcare sectors

Our expertise includes mapping common types of business systems, processes and practices to the network infrastructure required to support them.



Proven state-of-the-art methodology

Our methodologies involve standardized, proven processes, with a high degree of flexibility to customize design and delivery to best meet the individual needs of each client.



Leveraging tailored templates

These templates use proven methodology and are adapted to meet client needs.

- ✓ Survey templates
- ✓ Design templates



Targeted surveys and assessments

Surveys and assessments are focused on current and future needs of the client and facility:

- ✓ Predictive wireless design
- ✓ Wireless surveys and remediation recommendations
- ✓ Wireless design validation (on-site)
 - AP placement
 - Cable pathways and lengths
- ✓ Current infrastructure
 - Closet surveys
 - Cabinets (size/depth), network devices
 - Cabling
 - Copper matrix and fiber identification
 - Environmental
 - Electrical, AC/heat, lighting
 - Backup power



Dedicated and highly experienced implementation team for network modernization

Our traveling teams are familiar with adjacent systems such as:

- ✓ Patient portals
- ✓ Mobile apps
- ✓ EHRs
- ✓ 3D printing
- ✓ Virtual and augmented reality
- ✓ Artificial intelligence
- ✓ Wearables
- ✓ IoT devices
- ✓ Automated medical technology
- ✓ Healthcare education

Team members are experienced, trained and certified in multiple relevant technologies, including:

